

## SUPER BUYS | JULY

| Prices valid until 07.31.2025



### **36806** LIST - **\$1,695**

- Breathable Light Air Grid® back with adjustable lumbar support
- Thick padded black top grain leather seat
- One touch pneumatic seat height adjustment
- 2-to-1 synchro tilt control with adjustable tilt tension
- Adjustable top grain leather headrest
- Cantilever platinum finish arms with PU pads
- Heavy duty platinum finish aluminum base with dual wheel carpet casters
- Has achieved GREENGUARD certification
- PATENT# US20040262975 A1



**97720-R107 LIST - \$1,275**

- Breathable ProGrid® back with adjustable lumbar support
- One-touch pneumatic seat height adjustment
- Synchro control with infinite lock, seat slider and adjustable tilt tension
- Height, width & depth adjustable PU padded arms
- Heavy duty titanium finish base with dual wheel carpet casters
- Has achieved GREENGUARD Certification
- Cal 133 compliant



 **TAA Compliant**

**NEW ARRIVAL**



Dillon Black  
(-R107)

**new**  
**SOFT-  
FLEX**  
*frame™*

**69350-R107 2-Pack**

**LIST - \$1,225**

- Breathable ProGrid® mesh back with soft PU padded Soft-Flex Frame™
- Padded seat
- Black finish frame with dual wheel carpet casters
- Horizontal nesting
- Has achieved GREENGUARD Certification



**ProGRID®**



NEW ARRIVAL

## INTERMEDIATE TRAVEL



**275 lb.**  
weight limit

ProGRID®

FreeFlex® II  
Coil (-30)

**69330 LIST - \$640**

- Soft PU padded back frame with ProGrid® mesh back
- One-touch pneumatic seat height adjustment
- Thick padded seat
- Height adjustable footring
- Heavy duty nylon base with dual wheel carpet casters

**Height Range: 39.25-46.5" H**



**ProGRID®**

**2817-30 LIST - \$520**

- Breathable ProGrid® back with built-in lumbar support
- One touch pneumatic seat height adjustment
- Padded seat in FreeFlex® II Coal (-30)
- Ratchet back height adjustment
- Nylon base with dual wheel carpet casters
- Has achieved GREENGUARD certification

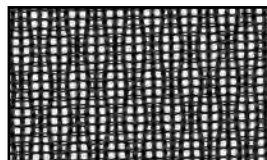
## SUPER BUYS | JULY

| Prices valid until 07.31.2025



### **EM96809C-3** LIST - **\$475**

- Breathable mesh back with built-in lumbar support
- Black molded frame
- Padded black fabric seat
- PU padded flip arms
- One-touch pneumatic seat height adjustment
- Locking tilt control with adjustable tilt tension
- Chrome base with dual wheel carpet casters





## SUPER BUYS | JULY

| Prices valid until 07.31.2025



### FL660

LIST - \$525

- Thick padded contour seat & back with built-in lumbar support
- One touch pneumatic seat height adjustment
- Locking tilt control with adjustable tilt tension
- Fixed padded loop arms
- Heavy duty nylon base with oversized dual wheel carpet casters



Chocolate Faux Leather (-U2)



Black Faux Leather (-U6)

## CODE30 BATTLESTATION GAMING DESK



White Carbon Fiber (-WCF)  
\*Accessories not included



### CODE30-WCF LIST - \$900

- Built-in 2 power outlets with dual USB-A and USB-C ports
- White carbon fiber matte surface for fast-tracking mouse response
- Raised monitor shelf for optimum viewing position
- Under-shelf multi-colored LED lighting with remote control
- Perforated steel leg with RGB LED glow
- Headphone and accessory hook
- Built-in storage tray with standup device channel
- Cup holder
- 47.75" W x 24.75" D x 36.75" H





# XPLORER 51 GAMING CHAIR



**XPL5125 LIST - \$750**

- Flip up padded armrests
- Multi-colored accents
- Thick padded coil spring seat
- Integrated lumbar support
- One-touch pneumatic seat height adjustment
- Locking tilt control with adjustable tension
- Integrated headrest
- Full 360° rotation
- Perforated airflow material offers natural comfort and cooling
- Nylon 5-Star base
- Heavy duty dual wheel casters with racing spokes
- 28.25" W x 30.25" D x 45.25-49" H



## SL5600 LOUNGE COLLECTION

Smoke Faux Leather  
(-P52)



### SL5602

LIST - **\$995**

- Attractive Modern Style
- Quality-built, kiln-dried wood construction
- Superior, high-density foam seat
- Heavy-duty steel legs in polished chrome finish
- Anti-scratch floor glides
- 48.5" W x 28" D x 32" H



Cream Faux Leather  
(-PD28)



Cream Faux Leather (-PD28)



Smoke Faux  
Leather (-P52)

### SL5601

LIST - **\$850**

- Attractive Modern Style
- Quality-built, kiln-dried wood construction
- Superior, high-density foam seat
- Heavy-duty steel legs in polished chrome finish
- Anti-scratch floor glides
- 26.5" W x 28" D x 32" H